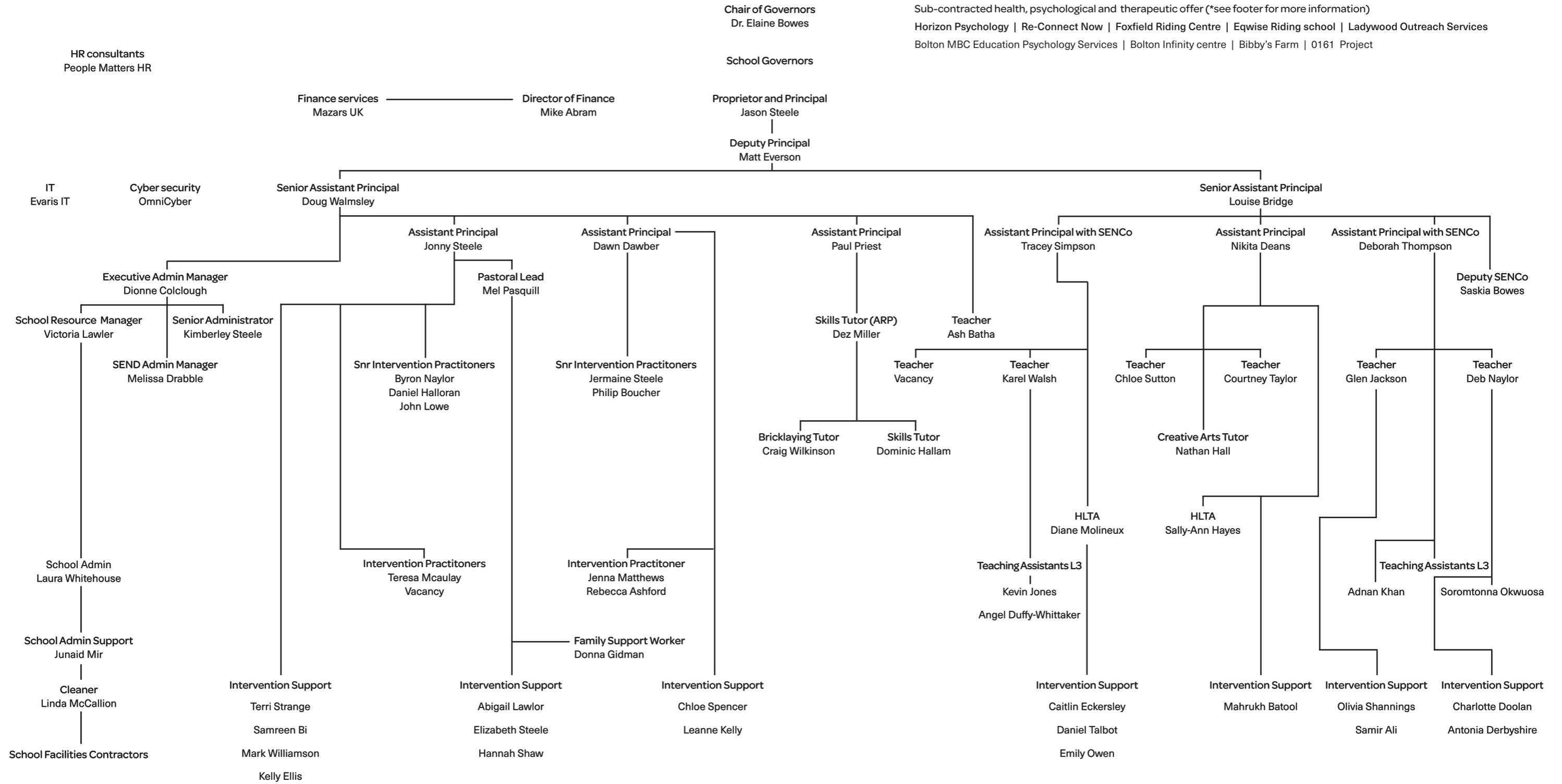


Organisational chart

v2.3 / May 2024



*Raise sub-contracted health, psychological and therapeutic offer

Horizon Psychology. Lead by HCPC-registered practitioner psychologists Dr Megan Bowes and Dr Louise Roper. Clinical supervision, health and therapeutic planning, compassion-focused therapies, training, assessing and monitoring progress. Health Intervention Co-ordinator: Hannah Sloan.

Re-Connect Now. Lead by Psychological Therapist Andrea Edward. Cognitive behavioural therapy, person-centred, integrative psychotherapy, play and art therapies.

Foxfield Riding Centre. Proprietor: Clare O'Donnell.

Eqwise Riding school. Proprietor: Lisa Powell

Ladywood Outreach Services. CELF sessions, ADHD and BSCIP observations and write-ups, SPLD assessments for access arrangements and Writ sessions.

Bolton MBC Education Psychology Services. Part of our Social Emotional Aspects of Learning (SEAL) offer. Promotes self-awareness; help with managing feelings, motivation, empathy and social skills. Provides unique places to learn, learning together, keep on learning, and learning about me.

Bolton Infinity centre. Sports, fitness, dance, art, learning and play offer.

Bibby's Farm. Regional scouts centre and forest school venue. Connect to self, others, and nature; learning to be together, to learn together, and connect with the outdoors and nature. Instructors for recreation, climbing, team building and social skills, water sports and play, and wilderness therapy.

0161 Project. Education and mentoring through boxing and fitness.